

Quilting the Kaye Wood Way!

It's the technique that makes it easy!

Biscuit Pillow

by Kaye Wood

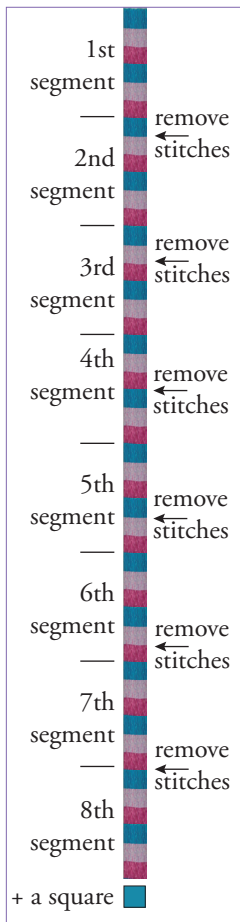
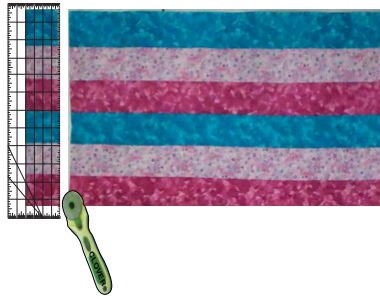
Kaye's has simplified the making of the Biscuits

Pillow	
14" x 14"	
3 fabrics	¼ yd of each
Pillow back	½ yd
Pellon 1" grid**	17" x 17"
Fiberfill	1 package
Pillow Form	14"
**Pellon interfacing with 1" gridded lines	



Cut two 4" x 33" strips from each of the 3 fabrics.

Sew strips into one strip set, using ¼" seam allowances. Press seam allowances all in one direction.



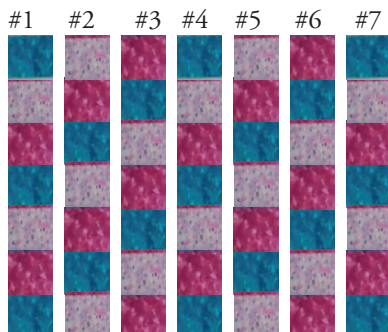
Cut the strip set into eight 4" segments.

Sew the segment strips into a long strip.

Add a 4" x 4" square from the first fabric
Sew this square to the bottom of the long strip.

Take out the seam between every 7th and 8th square.

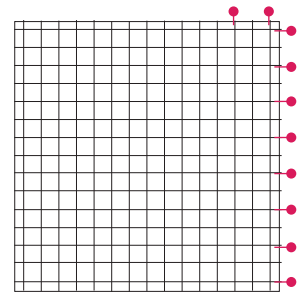
Lay our the 7 rows into this design.



The Pellon Quilter's Grid will form the base of the biscuit section.

At the left side of the grid, start at the first horizontal line and pin mark every other horizontal line.

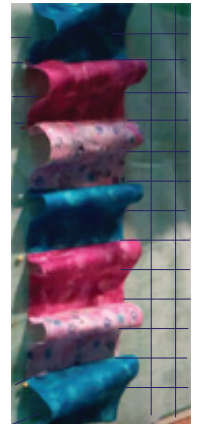
At the top of the grid, pin mark the first and third vertical line.



Place Row #1 of the on the gridded square, wrong side down.

The edge of the row should line up with the first vertical line on the grid.

Using the pins already on the grid, pin each seam line to every other horizontal line (2 inches) on the Pellon square.



Sew the left hand side of Row #1 to the gridded square, making a pinch pleat in each biscuit square so the seamlines match every other line on the gridded square. Remove each pin before sewing.

Bring the right hand side of the row to the second vertical pin.

Pin each biscuit seamline to match the horizontal grid lines.

Sew the top and the bottom of the row of biscuit squares to the top and bottom grid lines.



On each horizontal seamline, use a 2nd pin in the middle of the seam. This pin will keep the fiberfill inside each biscuit. DO NOT remove these pins until every row is sewn.

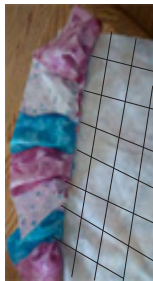
Insert fiberfill into each square; the pins along the horizontal seamline will keep the pieces of fiberfill within each square.



Sew the right hand side of Row #1 to the gridded square, removing each pin, making a pinch pleat in each biscuit so the seamline match the grid line.



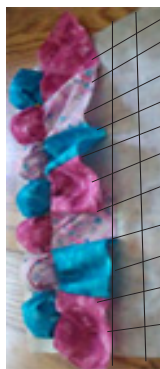
Pin Row #2, right side down, on top of the raw edge of the Row 1. Sew the strip, pleating each biscuit and matching seamlines.



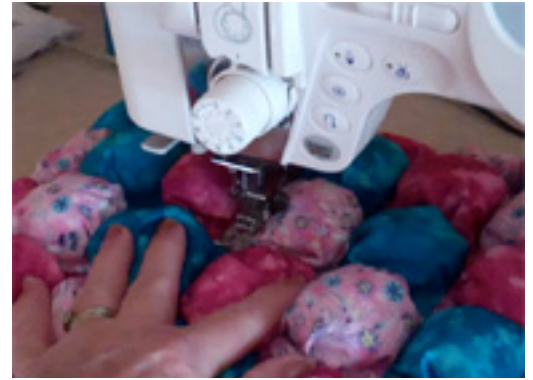
Bring the raw edge of Row #2 to the line printed on the gridded square, pinning on the seamline between each biscuit. Also place a pin horizontal seamline between each biscuit to hold the fiberfill in place.

Fill each biscuit with fiberfill. Sew this strip to the grid line, pleating each biscuit and matching seamlines, removing each pin as you sew.

Repeat with each row.



Topstitch in the ditch across the rows of biscuits, removing each pin as you sew.



Finish the pillow.

Cut two pieces of backing fabric 16" x 20".

Fold and press each fabric in half, wrong sides together, so each piece measures 10" x 16".

Line up and pin the raw edges of both backing pieces to the right side of the pillow top.

The backing pieces overlap on the folded edges, leaving an opening to insert a pillow form.

Sew around the entire outside of the pillow top.

Trim the seam allowance.

Turn right side out.



Insert a pillow form in the pillow.

Quilting the Kaye Wood Way!

It's the technique that makes it easy!

For more complete directions for both a quilt and a pillow, ask for P502 Biscuit Quilt.

Kaye Wood Inc
PO Box 456
West Branch, MI 48661
800-248-5293

Kaye's Tips and Techniques
Kaye's Teaching Schedule
and much more on
www.kayewood.com

Kaye's quilting videos 24/7
www.youtube.com/user/kayewood